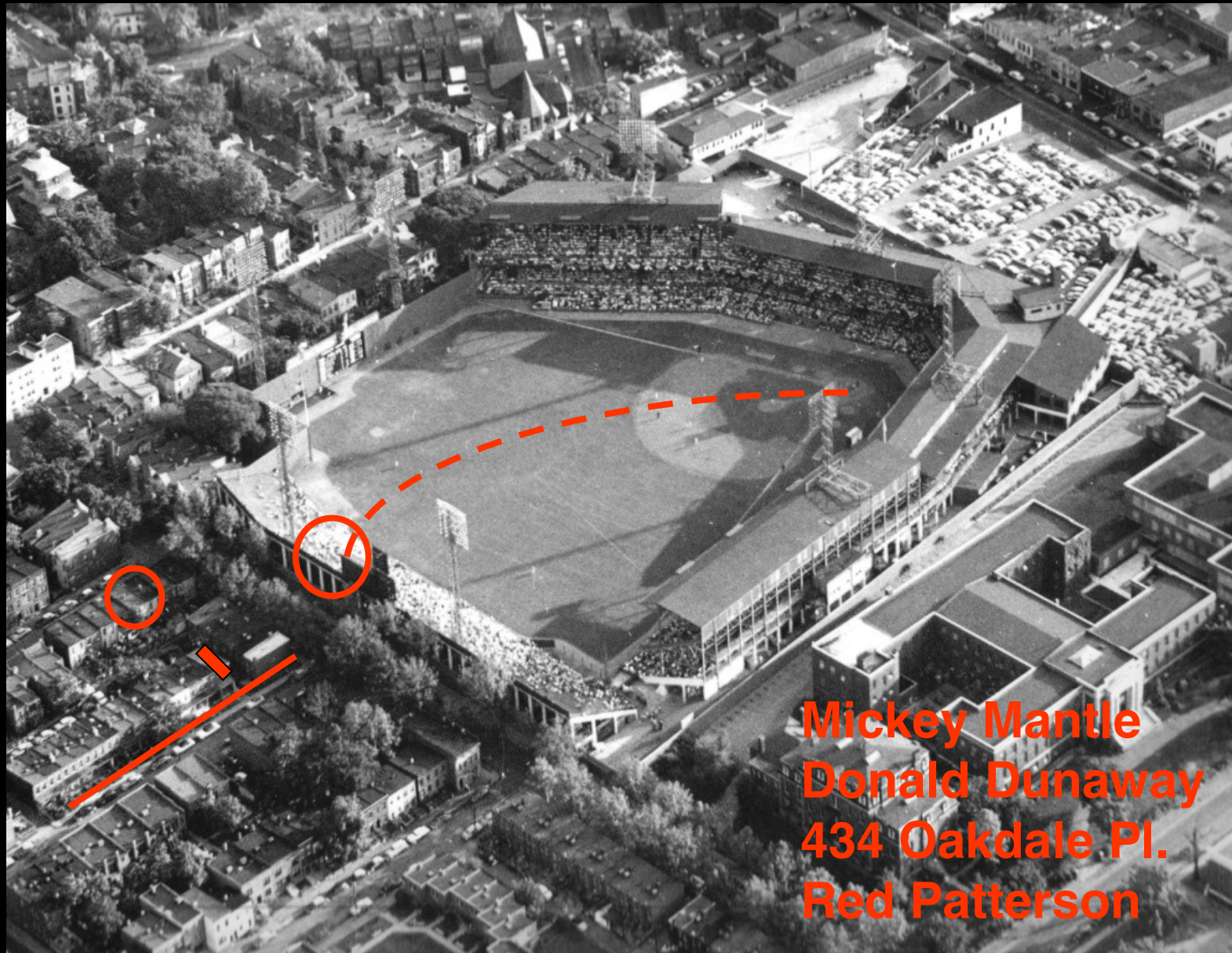
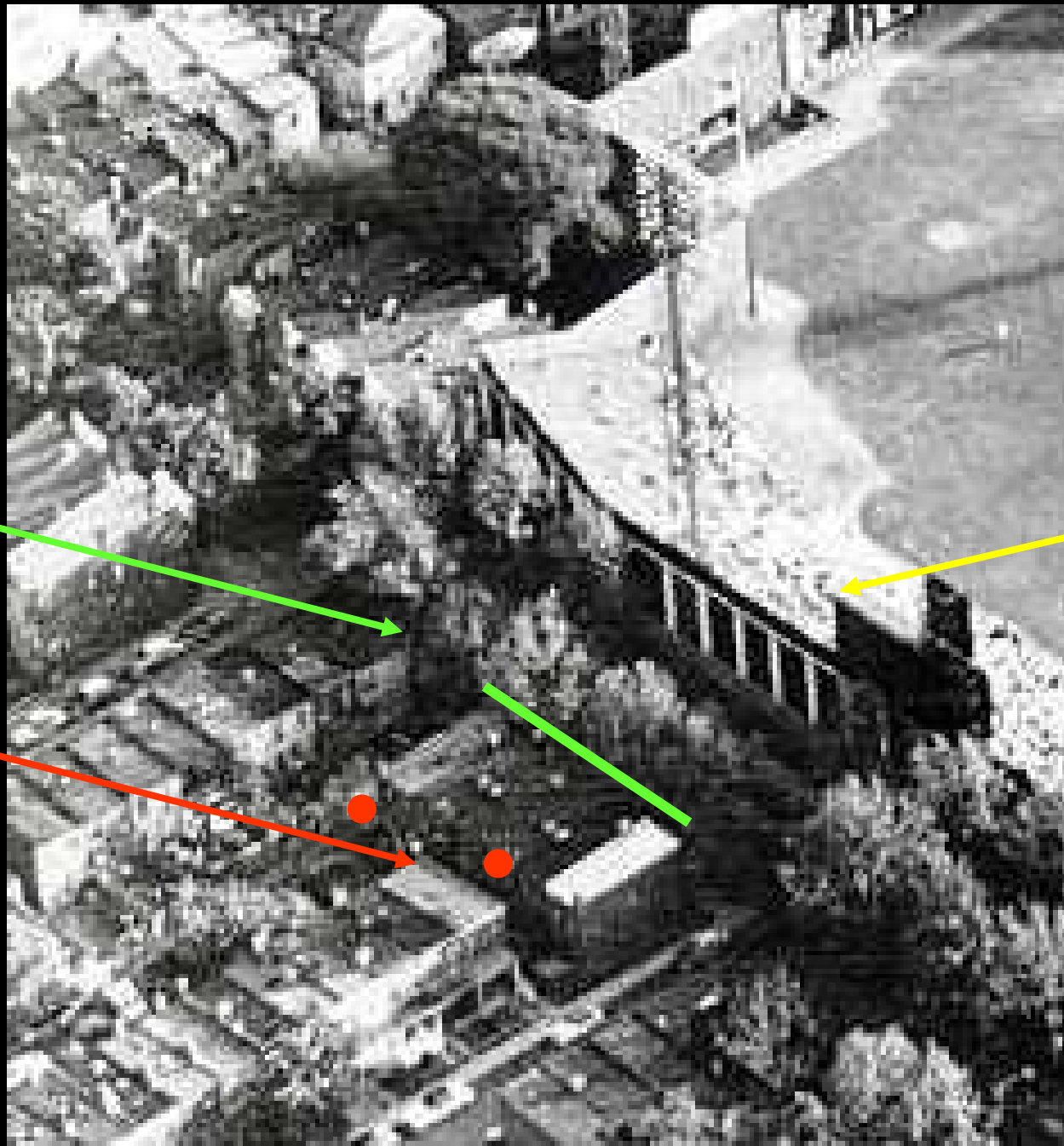


Griffith Stadium, ca. 1960



Mickey Mantle
Donald Dunaway
434 Oakdale Pl.
Red Patterson

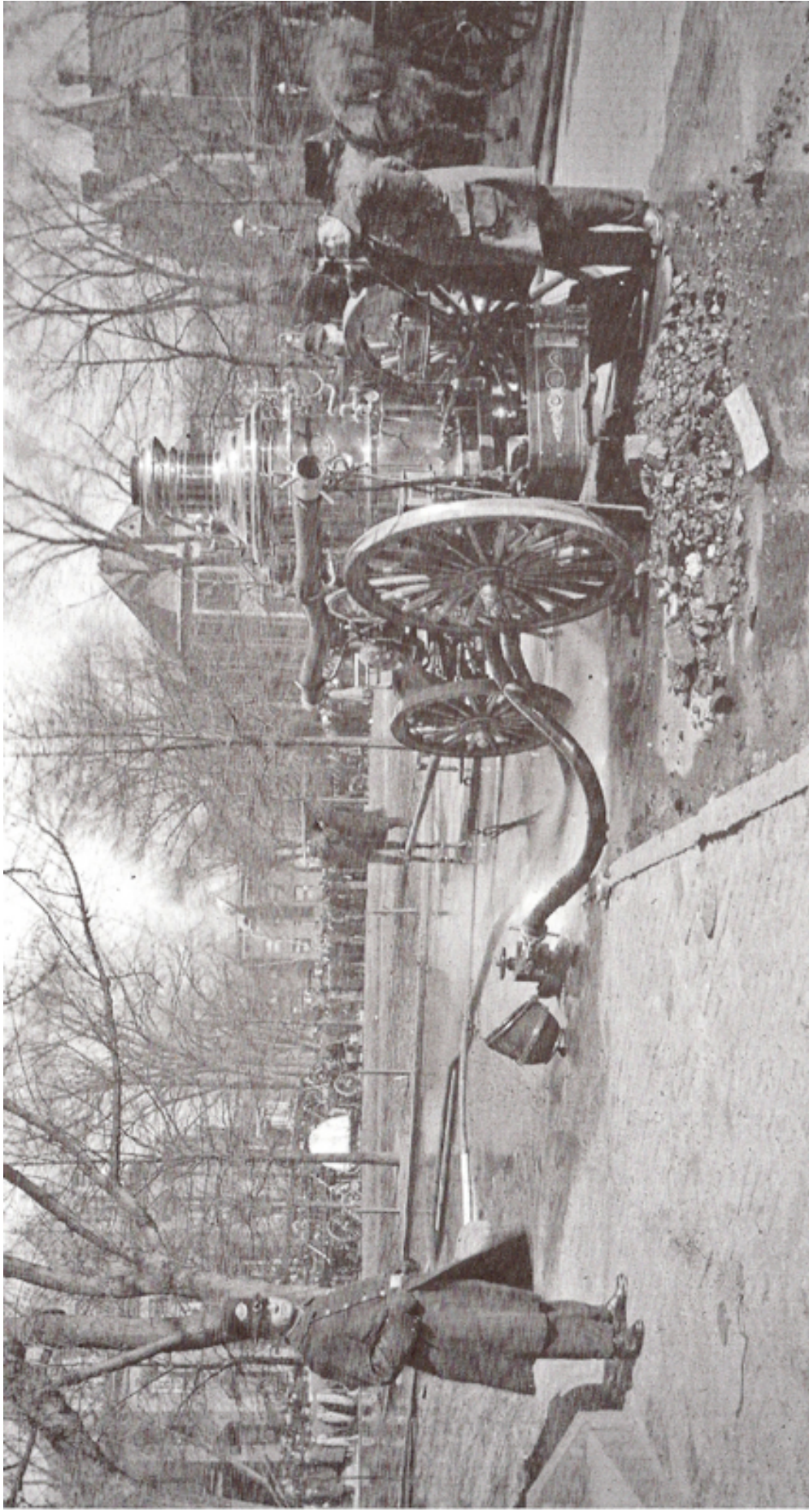




5th St NW

434 Oakdale

beer sign



T Street at Anna Cooper Circle in 1910



Alfred Boschke Map of the District of Columbia, 1856-9.
Confiscated from the home of engraver David McClelland by the U.S. Army during the Civil War.

